



# Valley Churches United

## 2021 Annual Report

### Neighbors Helping Neighbors

Valley Churches United is primarily a year-round food pantry serving qualified residents of San Lorenzo Valley, Scotts Valley, Bonny Doon and including the Summit area.



## Looking back at our year of 2021 and looking forward to 2022

### A message from the Executive Director

As I look back at 2021 I am reminded of how carefully we managed our food pantry and our client programs with Covid safe protocols the entire year. Our success of remaining open all year without any Covid issues was a collective effort from our staff, volunteers and clients all adhering to our safe operational changes to help our clients-in-need.

This year of 2022 is slowly giving us hope that we will be able to shift our operations to include our weekly pantry volunteers who have been patiently waiting to return and serve our clients. We are also looking forward to including our two very popular fundraising events, our garden tour and gala event that have been on hold the last two years.

This year marks our 40<sup>th</sup> anniversary of serving our community in the spirit of 'Neighbors Helping Neighbors'. The relentless 1982 winter storms that caused so much destruction and death from the landslides and floods in the San Lorenzo Valley also brought everyday folks coming together to help each other near and far. It is so inspiring to

Continued on page 2

### Programs

Year-round food pantry serving qualified clients within our service area

Emergency rental and utility assistance to qualified clients on a case-by-case basis

Easter, Thanksgiving and Christmas special distributions including toys for children

Back to School Backpack program and educational scholarships for qualified students

Disaster assistance during an emergency



Valley Churches United bridges the gap in times of crisis by providing assistance to local residents, thus promoting stability, self-sufficiency and hope.

# 2021 Annual Report message from the Executive Director

Continued from page 1.

together to help each other. Forty years later we are still going strong and able to help so many folks when they find themselves in need of some support to get back to get back on track and self-sufficient.

Our incredible donors and volunteers have been at the core of our success during all these years of providing support for local folks in their time of need. To be a nonprofit organization that has successfully kept our food pantry programs serving families, seniors and single adults through four decades is quite an accomplishment. As Annette Marcum's vision has carried on with her 'Caring is Sharing' and 'Hunger doesn't take a Holiday', we are so fortunate to know we will continue to help those in need of a hand up for many years to come.

The gratitude that we experience first-hand throughout the year from clients, volunteers, donors and so many community members is breathtaking. After the challenges our clients have endured the last few years, we look to the future with hopes of better times and a lighter load of hardships. Whatever comes our way Valley Churches United is here to help due to the amazing kindness and generosity of so many incredible donors who keep us going stronger than ever. We share our deepest gratitude with all of you!



"At Valley Churches we saw first-hand the continuing struggles our clients faced this past year due to various Covid related issues and the very involved recovery efforts of the CZU fire. 2022 is the second anniversary for both events. We see clients rebounding at different stages from being completely self-reliant to needing many resources to recover. The financial support of the community is truly inspiring, providing desperately needed support for so many!"

With gratitude, Lynn Robinson

## Valley Churches United Staff



Linda Meyer, Operations & Programs Manager  
Lynn Robinson, Executive Director  
Sarah DeWorken, Operations Assistant

In 2021 we continued with the Covid mandates, which meant our staff did an incredible job of managing all the client programs without our large team of volunteers. Linda and Sarah single handedly ran the entire food pantry every week all year long. This has remained the case leading into 2022, and we can't wait until our volunteers are part of our daily schedules again! In 2021 we also experienced the well-deserved retirement of our Operations Director Linda Lovelace after her spectacular twenty-plus year career improving the lives of thousands of clients. She was the very first employee, working alongside Annette Marcum, always making a positive difference for clients with her calming style!



# Valley Churches United is truly volunteer-powered!

There are so many opportunities to help those in need in our own community by volunteering a few times a year, a month, a week or even more as many of our wonderful volunteers do. From special holiday projects to everyday pantry tasks, or picking up food donations, there is always a job to be done. We truly have such fantastic volunteers that serve with such joy. In 2022 we are looking forward to all our volunteers returning and we love welcoming new volunteers too!



In the spring of 2021 we sadly lost our very special Jane Hurlbut, our long time Pantry Manager. She helped provide support and guidance to hundreds of clients over the many years she volunteered at Valley Churches. She was so young at heart even as she struggled with her health in later years. She loved to help others in need and we miss her dearly.

In the fall of 2021 two truly amazing volunteers finally 'retired' from their 30 plus years of giving their time and boundless energy to Valley Churches. Over the years Ed and Susan Oliver so joyfully volunteered in so many capacities doing whatever was needed to be done. They most recently drove our van every Wednesday picking up food donations. We wish them well with their newly found time to enjoy traveling!



***Come and join our amazing team of volunteers!***

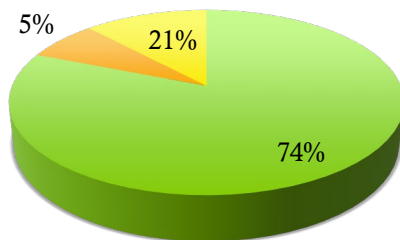


# VALLEY CHURCHES UNITED 2021 BY THE NUMBERS



**2021**

■ Client Programs   ■ Fundraising   ■ Administration



Client Programs =

\$647,155

Fundraising =

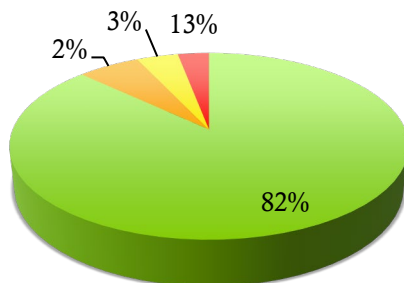
\$45,267

Administration =

\$185,152

**Client Programs**

■ Food Pantry   ■ Housing assist   ■ Transportation/Other   ■ CZU fire assist



Food Pantry assistance =

\$567,823

Housing assistance =

\$13,399

Transportation/Other =

\$20,898

CZU fire support =

\$87,807

# VALLEY CHURCHES UNITED 2021 FINANCIAL HIGHLIGHTS

## TOTAL REVENUE

\$2,617,997.00

## TOTAL EXPENSES

\$778,272.00

## TOTAL NET ASSETS

\$3,945,978.00

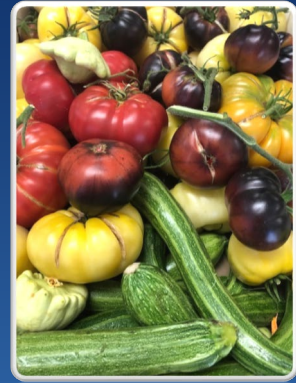
\* Financial figures based on July 1, 2020 - June 30, 2021 fiscal year



# Connect With Valley Churches United

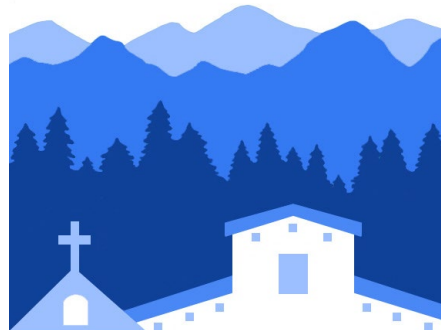
As a nonprofit that has been serving the community for over 40 years, we often experience multi-generations giving back to their community year after year. It is such an inspiration to have people of all ages and stages in life support Valley Churches United through their financial donations and volunteer opportunities. One thing we hear consistently from donors that support us year after year is how important it is that they see the direct benefits that help local residents right here in our community. Providing that direct assistance for qualified clients in their time of need in order to help them get back on track is how we help through our pantry programs.

This continued success into 2022 could not be possible without your support. Please feel free to connect with us at Valley Churches United anytime!



Valley Churches United  
PO Box 367  
Ben Lomond, CA 95005

831-336-8258  
[vcum.org](http://vcum.org)



**Valley Churches United**

## VCUM Staff

Lynn Robinson – Executive Director

Linda Meyer – Operations & Programs Manager

Sarah Deworken – Operations Assistant

## WAYS TO DONATE

- **Mail checks to:** Valley Churches United, PO Box 367, Ben Lomond, CA 95005
- **Facebook or [www.vcum.org](http://www.vcum.org) and click Donate for a PayPal donation**
- **Visit in person at 9400 Highway 9, Ben Lomond, M –F, 9am – 4pm to donate.**